

Author: FC
Creation: 10/11/2014
Revision: 0

Crystal XE

Application note AN001

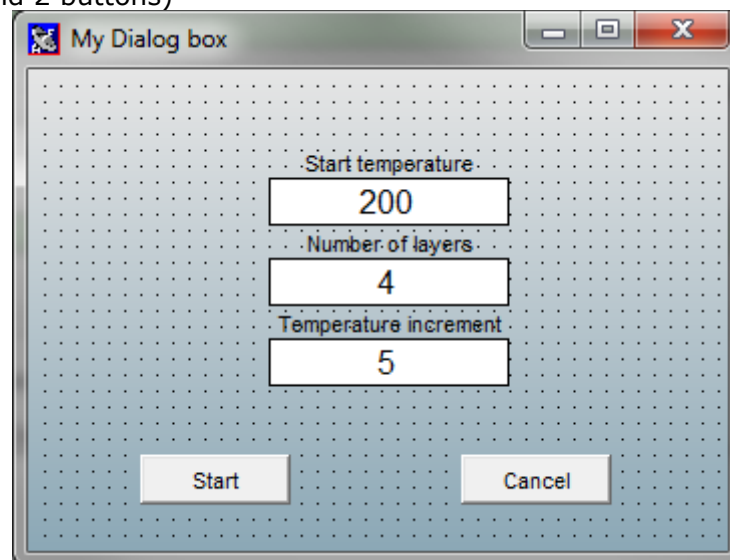
Use a dialog box in a recipe

Preliminary: make sure that you have the good rights to create a script and a form.

1. [Create the dialog box](#)

In the main menu, select File/New/New form

Create the following form which contain 5 objects as shown above
(3 indicators and 2 buttons)



Give the following names to the objects:

(Click on each object and enter the name in the yellow edit box located in the bottom of the tool palette)

- *StartTemp* for the indicator "start temperature"
- *NbLayers* for the indicator "Number of layers"
- *TempInc* for the indicator "Temperature increment"

You can enter a text for the title (in the tool palette, enter a text in the field Window title)

Double click on the Start button and enter the following script:

```
Begin
  SaveDataToIniFile('test.ini'); //Data of all objects will be saved
  CloseModal(1); // Close the dialog box and return 1
End;
```

→ User data of the form will be saved into the file test.ini (default directory is the data directory of the project)

RIBER ADDON VG SEMICON

Click once in the window background and enter the following script in the OnCreate event of the form:



```
Begin
  LoadDataFromIniFile('test.ini');
End;
```

→ The previous data of the form will be loaded when the form will be shown.

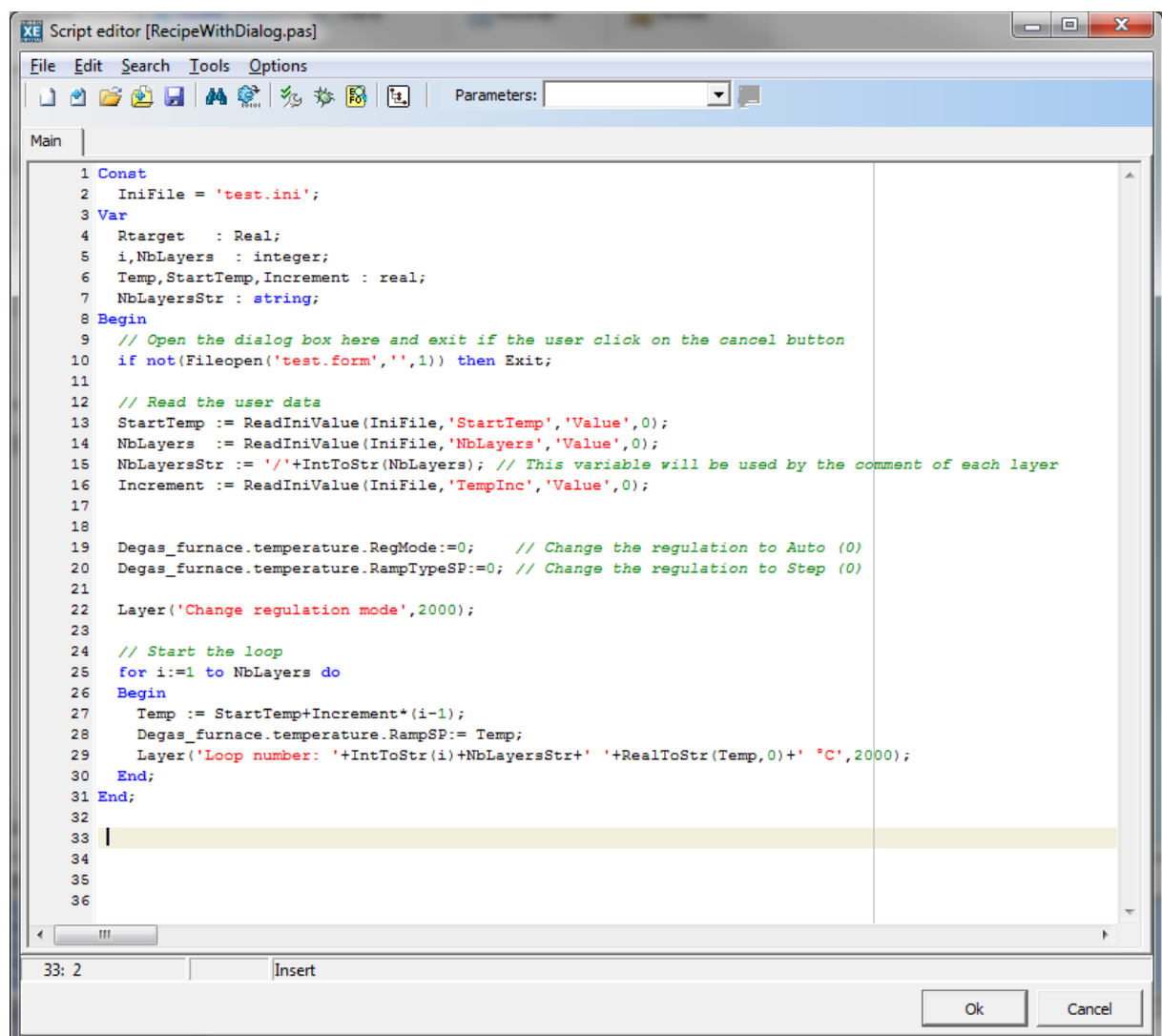
Double click on the Cancel button and enter the following script:

```
Begin
  CloseModal(0); // Close the dialog box and return 0
End;
```

Exit the Toolpalette and give a name **"test.form"** to save the form to a file.

2. [Create the Recipe](#)

In the recipe tab, just above the recipe inspector, click on the button "New script"



RIBER ADDON VG SEMICON



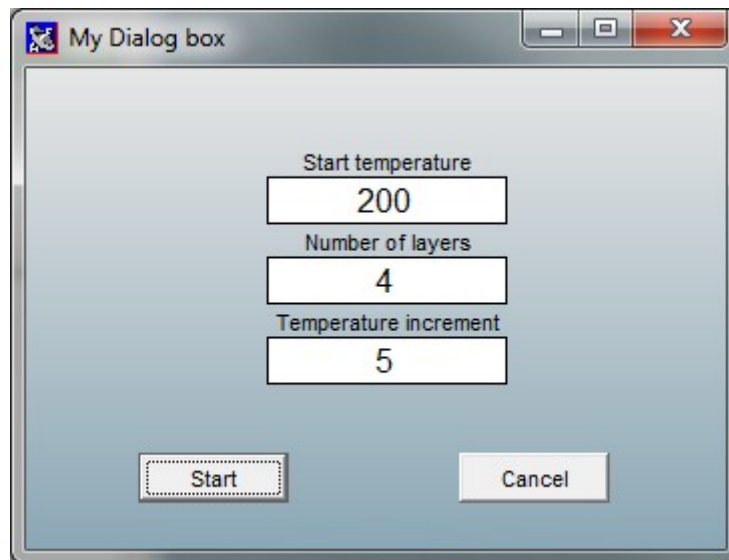
C:\riber\

Source is available here: RecipeWithDialog.pas

Save it to a file with the name of your choice.

3. Run the recipe.

- Open the script recipe into the recipe inspector.
- Press the Run button



Press Start

